

Educational Talent Search, Upward Bound and Gear Up



MCC Educational Talent Search (ETS)

Purpose: To expose students to higher education opportunities and to provide information and assistance with the college process, including financial aid, financial literacy, scholarships, and PSAT, SAT, and TOEFL tests.



"Talent Search opened many doors for me during the college process. Besides campus tours, the program helped with the application process itself. I had guidance with writing my college essay. Talent Search even assisted me financially, by paying for my SATs, my college applications and guiding me on how to complete my FAFSA. Talent Search made things a lot easier and possible for me."

*Meghan Kennedy
MCC ETS Alumni*

Currently working on a Masters of Public Administration at Norwich University

Description: Academic year student support program with major emphasis in academic advising, college visits, life skills, test taking skills and college prep workshops. ETS does have a summer component for rising 9th graders.

Target Population at Lowell High School: Students in grades 9–12 of which 2/3 are from low-income, first generation college families. Talent Search serves a total of 275 6-8th graders at the B.F. Butler and Kathryn Stoklosa Middle Schools.

Annual Enrollment: 500 Students at Lowell High School

Application Process: Interested students who show a commitment to learning and an earnest desire in pursuing a post-secondary education are encouraged to apply. Students must fill out an Educational Talent Search Application.

MCC GEAR UP* (Gaining Early Awareness and Readiness for Undergraduate Programs)



"I have continued my educational endeavors with my Master's in Public Administration at Suffolk University. This would not have happened if it were not for the help and support I had received from Gear-Up at the beginning of my academic success."

*Natalie Petit
GEAR UP Alumni*

Purpose: To increase the number of students graduating from high school and pursuing higher education.

Description: The program works in close collaboration with its target schools to offer students the resources needed to achieve academic success and exposure to higher education opportunities.

Target Population at Lowell High School: Grades 9–12. Students must qualify for Free/Reduced lunch. GEAR UP serves a total of 125 7th-8th grade students at the J.G. Pyne Arts School.

Annual Enrollment: 540 at Lowell High School

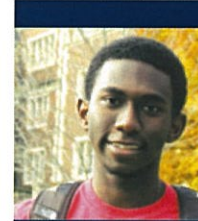
Application Process: Interested students who show a commitment to learning and an earnest desire in pursuing a post-secondary education are encouraged to apply. Students must fill out a GEAR UP: Massachusetts Application

**MCC GU is a partner with DHE
(one of 7 school districts)*

MCC Upward Bound

Purpose: To prepare students academically to enter programs of higher education.

Description: Upward Bound is a carefully planned and intensive program of college preparation. It is a semester-based credited academic program that is tailored to meet the specialized needs of students in grades 9–12. Additionally Upward Bound has a rigorous 6-week academic summer component.



"Growing up, going to college was my biggest dream. But never in my wildest dreams did I think it was possible for me to attend one of the best institutions in the world."

Upward Bound gave me opportunities I never would have had otherwise."

*Nana Frimpong
Upward Bound Alumni
Currently pursuing an undergraduate degree in Medicine at UPENN*

Target Population: Low-income and first-generation college bound students in grades 9–12.

Target School: Lowell High School

Annual Enrollment: 55

Application Process: Interested students who show a commitment to learning and an earnest desire in pursuing a post-secondary education are encouraged to apply. Students must fill out an Upward Bound Application. Upward Bound is a rigorous academic program. Potential candidates need to be committed to the program and actively participate in after-school tutorials and workshops. Students are admitted to the program in grades 9–11, but the greatest impact is on students who are enrolled by the 10th grade.



MIDDLESEX
Community College

For more information about MCC's ETS, Upward Bound and GEAR UP Programs, contact Colleen M. Winn, Director, Pre-Collegiate TRiO Programs and GEAR UP Massachusetts at winnc@middlesex.mass.edu or call 978-656-3401.