

June 1 – 5, 2020

Hello Second Grade Students and Families! It's us, your Murkland School Second Grade teachers! We miss you all so much and hope that you are all happy and staying healthy.



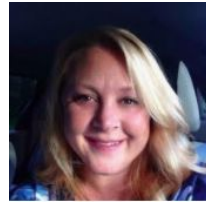
Mrs. Kaufman
Room 212

M-F Office Hours: 9a – 10a
mkaufman@lowell.k12.ma.us



Miss Rich
Room 213

M-F Office Hours: 2p – 3p
drich@lowell.k12.ma.us



Mrs. Quealy
Room 218

M-F Office Hours 2p – 3p
equealy@lowell.k12.ma.us



Miss Keenan
Room 219

M-F Office Hours: 2p – 3p
ckeenan@lowell.k12.ma.us



Mrs. DeMatteis
Special Education Teacher
M – F Office Hours: 9a – 10a
jdematteis@lowell.k12.ma.us



Miss Watts
Teacher Aide
ajwatts@lowell.k12.ma.us



Mr. St. Lawrence
English Learner Teacher
M-F Office Hours 10a – 11a
dstlawrence@lowell.k12.ma.us

At Home Learning Resource Packet: Week 11

	Monday	Tuesday	Wednesday	Thursday	Friday
Reading	Read for at least 20 minutes. --Books --Online (Epic, Raz-Kids, etc.) --YouTube LPSD read alouds Fill out reading log!	Read for at least 20 minutes. --Books --Online (Epic, Raz-Kids, etc.) --YouTube LPSD read alouds Fill out reading log!	Read for at least 20 minutes. --Books --Online (Epic, Raz-Kids, etc.) --YouTube LPSD read alouds Fill out reading log!	Read for at least 20 minutes. --Books --Online (Epic, Raz-Kids, etc.) --YouTube LPSD read alouds Fill out reading log!	Read for at least 20 minutes. --Books --Online (Epic, Raz-Kids, etc.) --YouTube LPSD read alouds Fill out reading log!
Writing	Write a Narrative Examples and charts can be found in A.H.L. Packet (Pages 8 -12) and on our Google Classroom	Write a Narrative Examples and charts can be found in A.H.L. Packet (Pages 8 -12) and on our Google Classroom	Write a Narrative Examples and charts can be found in A.H.L. Packet (Pages 8 -12) and on our Google Classroom	Write a Narrative Examples and charts can be found in A.H.L. Packet (Pages 8 -12) and on our Google Classroom	Write a Narrative Examples and charts can be found in A.H.L. Packet (Pages 8 -12) and on our Google Classroom
Math	Application Problems A.H.L. Packet pages 18, 19 and on our Google Classroom	Application Problems A.H.L. Packet pages 21, 22 and on our Google Classroom	Skip counting by 5's A.H.L. Packet pages 23, 24 and on our Google Classroom	Skip counting by 10's A.H.L. Packet pages 27, 28 and on our Google Classroom	Even and Odd A.H.L. Packet pages 41, 42 and on our Google Classroom
Online Learning	Student Choice: --iReady. --Raz-Kids. -Epic --Brainpop Jr. etc.	Student Choice: --iReady. --Raz-Kids. -Epic --Brainpop Jr. etc.	Student Choice: --iReady. --Raz-Kids. -Epic --Brainpop Jr. etc.	Student Choice: --iReady. --Raz-Kids. -Epic --Brainpop Jr. etc.	Student Choice: --iReady. --Raz-Kids. -Epic --Brainpop Jr. etc.
Science / Social Studies (Optional)	Science: Animals and Plants in their Habitats. A.H.L. Packet pages 44-45 and on Google Classroom.	Social Studies: What is El-Al-Fitr? A.H.L. Packet page 46 and on Google Classroom	Social Studies: Arabesque Paper Lantern A.H.L. Packet pages 47, 48 and on Google Classroom		
Specials (Optional)	Library - See Google Classroom for an activity from Mrs. Desmarais	Art - See Google Classroom for an activity from Mrs. Pintzopoulos	Gym - See Google Classroom for an activity from Mr. Fendell	Music- See Google Classroom for an activity from Mrs. McLaughlin	