

June 8th – June 12th

Hello Second Grade Students and Families! It's us, your Murkland School Second Grade teachers! We miss you all so much and hope that you are all happy and staying healthy.



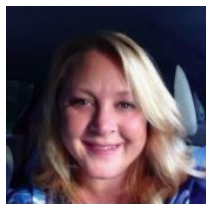
Mrs. Kaufman
Room 212

M-F Office Hours: 9a – 10a
mkaufman@lowell.k12.ma.us



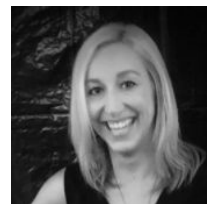
Miss Rich
Room 213

M-F Office Hours: 2p – 3p
drich@lowell.k12.ma.us



Mrs. Quealy
Room 218

M-F Office Hours 2p – 3p
equealy@lowell.k12.ma.us



Miss Keenan
Room 219

M-F Office Hours: 2p – 3p
ckeenan@lowell.k12.ma.us



Mrs. DeMatteis
Special Education Teacher
M – F Office Hours: 9a – 10a
jdematteis@lowell.k12.ma.us



Miss Watts
Teacher Aide
ajwatts@lowell.k12.ma.us



Mr. St. Lawrence
English Learner Teacher
M-F Office Hours 10a – 11a
dstlawrence@lowell.k12.ma.us

At Home Learning Resource Packet (A.H.L): Week 12

	Monday	Tuesday	Wednesday	Thursday	Friday
Reading	<p>Read for at least 30 minutes.</p> <p>Fill out reading log!</p> <p>Begin your summer reading plan A.H.L. Packet page 3</p>	<p>Read for at least 30 minutes.</p> <p>Fill out reading log!</p> <p>Begin your summer reading plan A.H.L. Packet page 3</p>	<p>Read for at least 30 minutes.</p> <p>Fill out reading log!</p> <p>Begin your summer reading plan A.H.L. Packet page 3</p>	<p>Read for at least 30 minutes.</p> <p>Fill out reading log!</p> <p>Begin your summer reading plan A.H.L. Packet page 3</p>	<p>Read for at least 30 minutes.</p> <p>Fill out reading log!</p> <p>Begin your summer reading plan A.H.L. Packet page 3</p>
Writing	<p>Write a Narrative Examples and charts can be found in A.H.L. Packet on pages 8-12 and on our Google Classroom</p>	<p>Write a Narrative Examples and charts can be found in A.H.L. Packet on pages 8-12 and on our Google Classroom</p>	<p>Write a Narrative Examples and charts can be found in A.H.L. Packet on pages 8-12 and on our Google Classroom</p>	<p>Write a Narrative Examples and charts can be found in A.H.L. Packet on pages 8-12 and on our Google Classroom</p>	<p>Write a Narrative Examples and charts can be found in A.H.L. Packet on pages 8-12 and on our Google Classroom</p>
Math	<p>Math Sprint - A.H.L. Packet page 23 Or Google Slide</p>	<p>Math Sprint - A.H.L. Packet page 24 Or Google Slide</p>	<p>Application Problems A.H.L. Packet pages 25-26 Or Google Slides</p>		
Online Learning	<p>Student Choice: --iReady. --Raz-Kids. -Epic --Brainpop Jr. etc.</p>	<p>Student Choice: --iReady. --Raz-Kids. -Epic --Brainpop Jr. etc.</p>	<p>Student Choice: --iReady. --Raz-Kids. -Epic --Brainpop Jr. etc.</p>	<p>Student Choice: --iReady. --Raz-Kids. -Epic --Brainpop Jr. etc.</p>	<p>Student Choice: --iReady. --Raz-Kids. -Epic --Brainpop Jr. etc.</p>
Science / Social Studies (Optional)	<p>STEM - Paper Plate Marble Run - see A.H.L. Packet or look on our Google Classroom</p>	<p>Science - How Are Insects and Flowers Dependent on Each Other? - see A.H.L. Packet or look on our Google Classroom</p>	<p>Social Studies - Making Friends and Around the World - see A.H.L. Packet or look on our Google Classroom</p>		
Specials	<p>Library - See Google Classroom for an</p>	<p>Art - See Google Classroom for an</p>	<p>Gym - See Google Classroom for an</p>	<p>Music - See Google Classroom for an</p>	<p>Remember to get out and play!</p>